

LIFTING WITH CONFIDENCE!

**NEW MAHA USA – 12,000 lbs Power Pack
HL Freedom 12,000**

“Celebrating 40 years of Engineering Excellence!”



- The most versatile Hydraulic Two-Post Lift on the market!
- Two-Post Lift for passenger cars, pick-up trucks and SUVs
- Free Standing Column Design
- No column extensions, no crossbeam, therefore no overhead obstruction
- Longest Arm Extension in the industry!
- Secure Arm Locking System recognized as best in the industry!
- Oversized Arm pins prevent arm sag caused by premature wear
- Electronic/hydraulic synchronization
- No equalizing cables required anymore
- German Engineering - Made in USA!

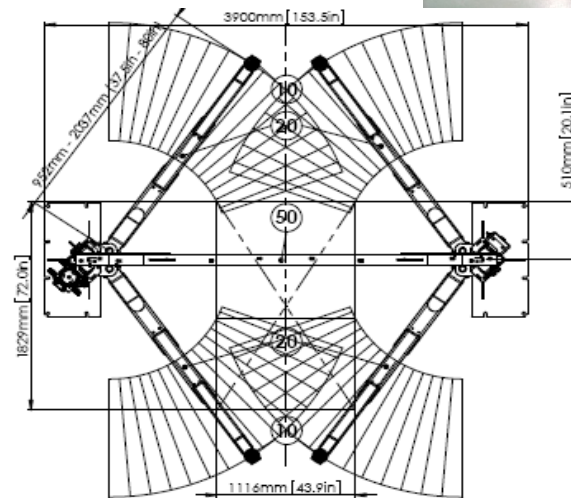
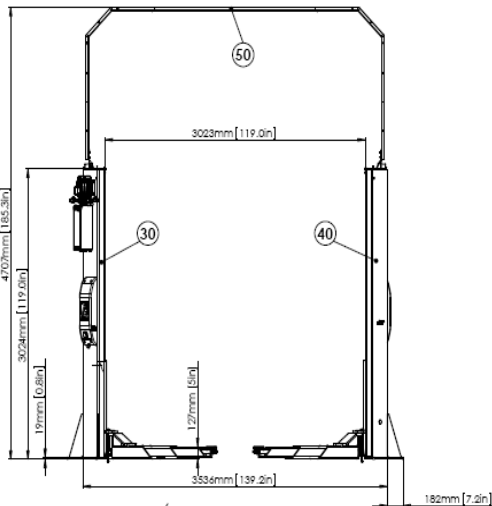
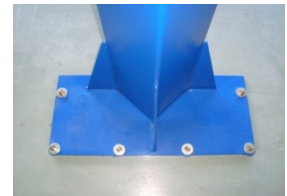
**Premium Workshop
Equipment**

NEW MAHA USA – 12,000 lbs Power Pack HL Freedom 12,000



Features

- 3 Stage Arm Extension up to 80" – longest arms in the industry
- Only 5" floor thickness requirement for free standing design
- Automatically engaging single point lock release system on each column
- Symmetric System with flat carriage for easy full door opening
- With 5" arm clearance the lift is suitable for small passenger cars at the same time
- Unique "drop in" design allows for the use of all lifting adapters on the MAHA HL Freedom 12,000 design
- Dual Control Panel for left and right column operation available
- Permanent self-monitoring of all safety functions



Technical Data

- | | |
|--------------------------|-----------------------|
| ➤ Capacity | 12,000 lbs |
| ➤ Maximum Lifting Height | 72 ¾" |
| ➤ Lifting Time | 43 sec |
| ➤ Overall Height | 162" - 185.3" * |
| ➤ Column Height | 118.3" |
| ➤ Arm Clearance | 5" |
| ➤ Arm Extensions | 37.5" - 80" |
| ➤ Overall Width | 153.5" - 163.5" |
| ➤ Drive Through Width | 107.5" - 117.5" |
| ➤ Motor Power | 2 HP |
| ➤ Power Supply | 208/230V 60HZ 1-Phase |
| ➤ Fuse Protection | 20 A |
| ➤ Shipping Weight | 2,000 lbs |



* = lift installed with extendable cable tray, first position at 162", second position at 174" and third possible position at 185.3". When lift is fully raised (complete cylinder extension) the overall height is 150.7" without cable tray.